

Physical loops

Loops and controller cabinet



connecting cables

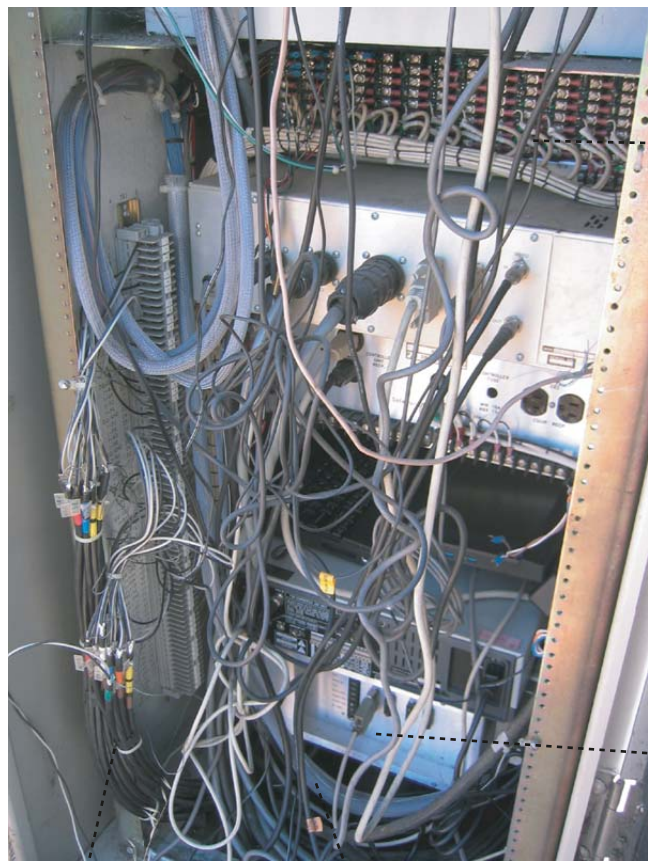
Controller cabinet- containing the electronics driving the loops

A professor- shown to scale

Front side of controller cabinet

(note 10 identical loop det. sensors are installed in this case)





Backside of controller cabinet

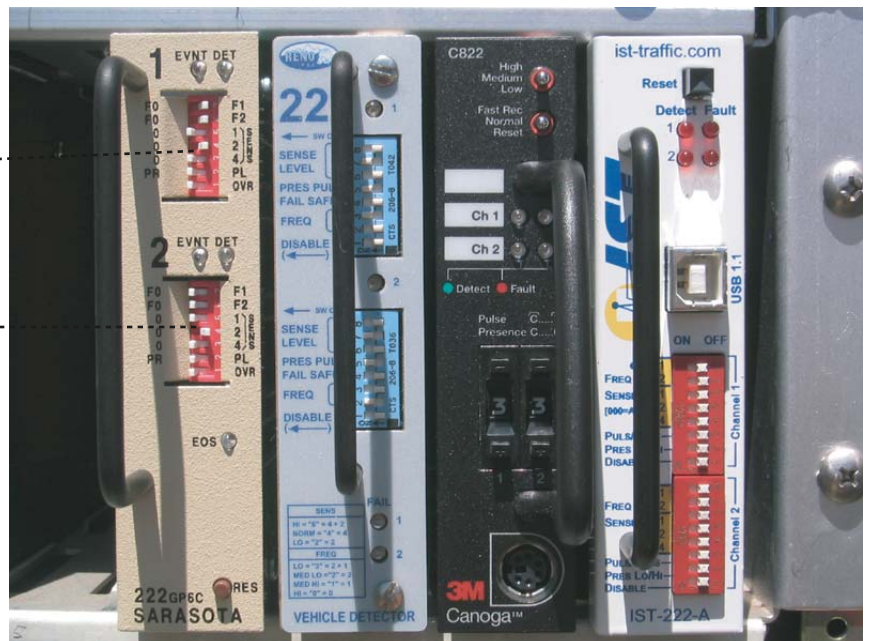
back side of loop sensor rack

backside of controller

to physical loops

controller input cable

Example of four different manufacturer's 222 sensor cards, all offering the same functionality, but different packaging



channel 1 settings

channel 2 settings

1 EVNT DET
F1 F2
1 2 4
PL OVR
2 EVNT DET
F1 F2
1 2 4
PL OVR
EOS
222GP6C SARASOTA RES

NEW 22
SENSE LEVEL
PRES PUL
FAIL SAF
FREQ
DISABLE
VEHICLE DETECTOR

C822 High Medium Low
Fast Rec Normal Reset
Ch 1 Ch 2
Detect Fault
Pulse Presence C
3M Canoga

ist-traffic.com
Reset Detect Fault
1 2
ON OFF
Channel 1 Channel 2
IST-222-A